

Capability Statement



Morin Research & Development Corp. (MRDC) is a small business delivering turn-key engineering & fabrication solutions to unordinary & complex electro-mechanical systems such as custom machines, mechanisms, chassis' & test stands. Typical deliverables include feasibility studies, product designs & drawings, engineering analyses, prototypes, & fabrication, installation & qualification of final systems. We serve our customers with integrity while delivering cost-effective solutions to unusually challenging engineering problems.

MRDC Has Served Clients from a diverse range of industries including aerospace, heavy industry, mass transit, medical, automotive & silicon wafer processing.



Benefits of working with MRDC:

- ★ Turn-key solutions whether or not all the capabilities reside inside MRDC
- ★ Diverse experience designing, analyzing & fabricating unordinary machines
- ★ Responsive & customer-focused service with integrity & courtesy
- ★ Extensive familiarity with government procurement processes & procedures
- ★ Demonstrated ability to deliver solutions large & small, locally & internationally

MRDC Detailed Services:

Engineering Management:

- Project management
- Feasibility studies
- Product developmental cost evaluation

Engineering Research & Development:

- Applied Research
- Machine Design
- Drawing Creation
- Reverse Engineering
- Welding Procedures Definition
- Design for Manufacturability
- Circuit Design
- Control Systems Programming
- System Documentation
- End users' Training

Engineering Analysis:

- Structural Finite Element Analysis
- Heat transfer
- Modal analysis
- Fatigue analysis
- Fluid dynamics
- Structure optimization

Prototype & Fabrication Services:

- Rapid Prototyping
- Component Fabrication
- Short-run Production
- System Assembly
- Software/Controls Integration
- Testing & Qualification
- Delivery & Installation

MRDC Facilities:

Sheet Metal Fabrication:

- Shear, break & roll
- Cutting & Sawing
- Pipe/conduit Bending
- Drilling & Reaming

Welding:

- Miller Millermatic[®] 350P MIG welder
- Miller Syncrowave[®] 350LX TIG welder
- Oxyacetylene torch/welder
- Ultrasonic weld inspection system
- Dye-penetrant weld inspection system

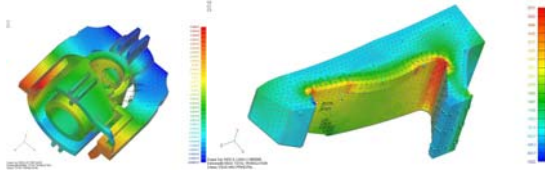
Electro-Mechanical Assembly:

- Soldering Station
- Variable 3 output DC power supply
- ESD safe workstation
- Calibrated inspection & measuring tools

Fabrication & Handling:

- 10,000lb forklift
- 10,000lb overhead crane
- 3,500 sf work shop space
- 2,000 sf engineering support office

MRDC Past Performance:



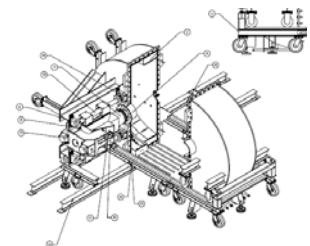
- Value Plastics; Contract 4988-1; Value: \$5k; Aug – Nov 2006; Study, model & propose methods to eliminate failures in plastic medical devices.

- USAF 846TS/46TG; Contract: FA9200-04-C-0319; Value: \$850k; Aug 04 – Aug 07; Phase I & II SBIRs to design, fabricate & test a 60' long, high altitude simulation chamber for use with rocket sleds.



- SCOMI Rail Bhd (Malaysia); Contract: LOA01; Value: \$570k; Oct 06 – Nov 07; Complete monorail vehicle design & 1st prototype fabrication observation including conceptual sketches, 3D modeling, engineering design, structural analysis of chassis & composite structures & fabrication documentation.

- USAF 846TS/46TG; Contract: FA9200-06-C-0321; Value: \$850k; Apr 06 – Jan 09; Phase I & II SBIRs to design, analyze, fabricate & demonstrate a machine to measure metal on metal sliding wear including all ancillary lifting & motion generating equipment.



MRDC Contact Information:

Morin Research & Development Corp.
975 Elkton Dr.
Colorado Springs, CO 80907

Chris Morin
Phone: 719-260-6689
Fax: 719-260-6731
cmorin@morin-rnd.com

Economic Status: Emerging Small Business
GSA Schedule: Not Yet

DUNS: 625225391

CAGE: 4EPA9

Primary NAICS:

- 333999 – Misc. machinery
- 541330 – Engineering Services